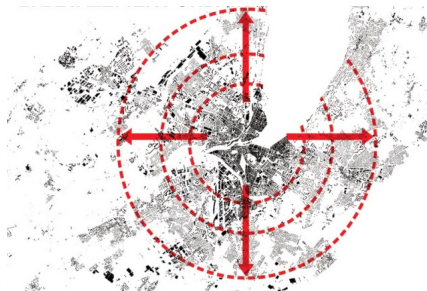
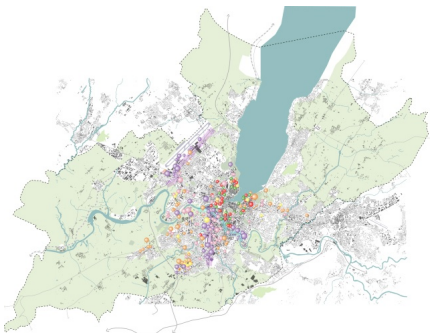
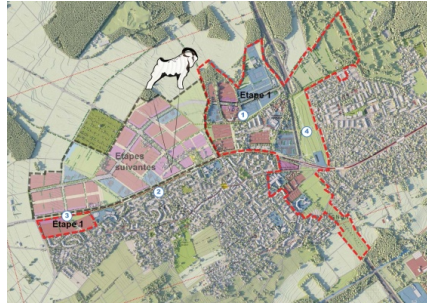
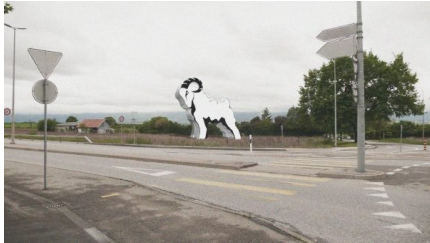
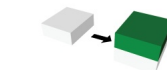


# LE BÉLIER TÊTU

2013-2014, Bernex, Geneva, Switzerland



## F - LES SURÉLEVATIONS



The project 'Le Bélier Têtu' (the stubborn ram), also known as 'Résistance', is part of the manifestation 'Genève Villes et Champs', an annual event which focuses on the urban expansion of Geneva in relation to its surroundings.

Le Bélier Têtu acknowledges the unique qualities of the countryside and proposes a halt to the ever increasing urban sprawl of Geneva. Le Bélier Têtu advocates urban densification and indicates potential locations and solutions in the inner city of Geneva. A huge inflatable ram <bélier> along one of

the city's main access roads is the symbol for the manifestation.

A independent website is also made for this project. Please see: [www.lebeliertetu.com](http://www.lebeliertetu.com)

client

Genève Villes et Champs

partners

atelier b29 architects

team

Martin Biewenga, Perry Maas, Pieter Bertheloot, Chris van Nimwegen