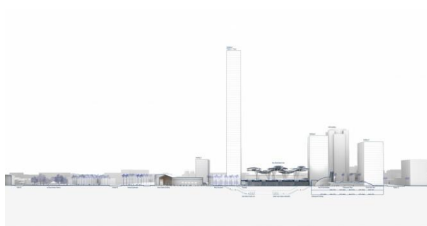
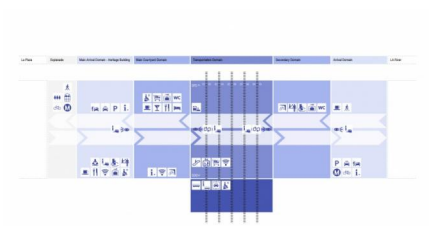
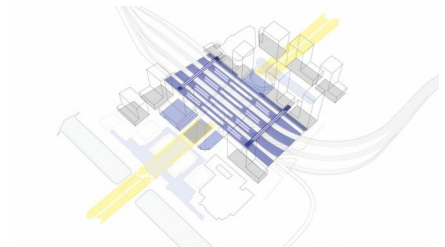
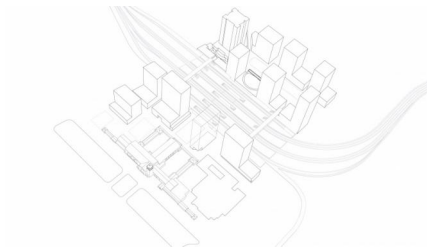
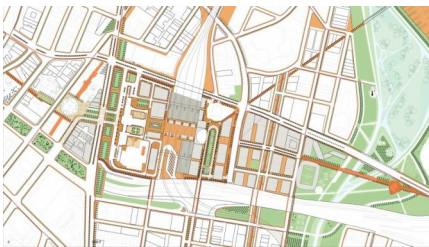


# UNION STATION MASTER PLAN RFP

2012, Los Angeles, USA



At the original crossroads of the city, Union Station is once again the landmark gateway to Los Angeles, and the inspiration for a vibrant future. Powered by 21st Century transit, the rebirth of Union Station and its district breathes new life into downtown Los Angeles, reconnecting new and historic neighborhoods that have long been cut off by freeways and overpasses.

From Olvera Street to the river and beyond, the station's elegant pattern of building and courtyard is extended outward into a rich, pedestrian-oriented network of streets and open spaces. A dynamic spectrum of arts, culture, recreation, education, and entertainment make the Union Station district a local retreat and a regional destination.

At the heart of the new district, a grand sequence of shaded groves and lush courtyard gardens welcomes visitors to the paradise landscape of Los Angeles, and offers residents a green retreat in the center of the city. From bus platforms, to light rail, to high-speed train service, riders will experience a new standard of speed and ease of movement, transformed by the fragrance of orange trees, and the unmistakable warmth and light of Southern California.

Details: [LA Metro](#).

#### client

Los Angeles County Metropolitan Transportation Authority (Metro)

#### partners

Moore Ruble Yudell Architects & Planners, TEN Arquitectos, Buro Happold

#### team

Adriaan Geuze, Jamie Maslyn Larson, Daniel Vasini, Kenya Endo, Shane Fagan, Juan Figueroa Calero, Julie Gawendo, Joost Koningen, Attilio Ranieri, Eva Recio, Matthew Skjonsberg, Joris Weijts